

Curso: **ENSINO FUNDAMENTAL II**

Série: 7º ano A/B/C

Trabalho de Recuperação Final

Data: /12/2025

Disciplina: Língua Inglesa

Professor(a): Aline R./ Juliana B.

Valor:20

Coordenação: Shyanne Souza M. Borges

Visto: *Symb*

Aluno(a):

Nº:

Nota:

ORIENTAÇÕES

- As questões devem apresentar todo o desenvolvimento do processo de resolução.
- Leia com atenção o enunciado de cada questão.
- Use lápis e, só após ter certeza, passe **TODAS as respostas finais a caneta**.
- Escreva com **letra legível**.
- Não é permitido o uso de calculadora, celulares ou qualquer aparelho eletrônico.
- **Não é permitido rasura.**

QUESTÕES

Contúdo a ser estudado: Magazines vol. 1, 2, 3, 4, 5, 6, 7, 8 e Worksheet vol 1 e 2.
Perguntas com WH
Global English
Membros do sistema vocal
Vírus x Bactérias
Esportes e saúde social
Pre-Columbian Civilizations
Summer and Winter Olympic sports
Sports ground area calculation
Tipos de mapas
Partes do olho
Organização do corpo humano
Estados da água
Mudanças físicas e químicas
Camadas Terrestres
Terremotos

1. Put the words in order to make questions: (**Organize** as palavras e forme perguntas)

a) to / What / do / like / play? / you

b) school subjects? / are / favourite / your / What

c) singers? / are / your / Who / favourite

d) your / game? / What / is / favourite

2. Which of these countries doesn't have English as an official language?

- a) Canada
- b) Ireland
- c) Italy
- d) New Zealand
- e) Australia

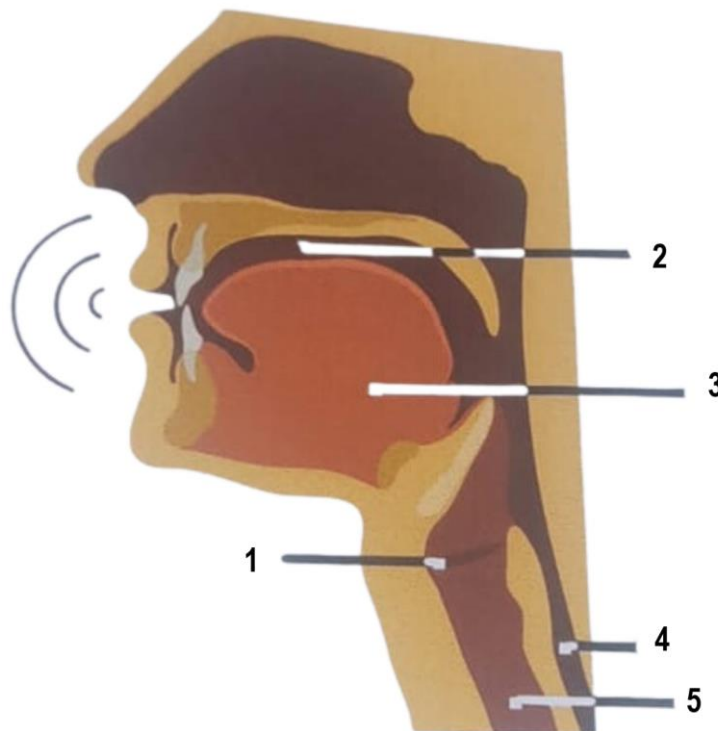
3. Match each word below with a synonym from the box. (Relacione cada palavra abaixo com um sinônimo da caixa)

doctor – virus – bacteria – infections – antibacterial drugs

- a) Diseases _____.
- b) Antibiotic _____.
- c) Physician _____.
- d) Single-celled organisms _____.
- e) Microscopic infectious agente _____.

4. Name using the words from the box. (Nomeie usando as palavras do quadro)

TONGUE – TRACHEA – ORAL CAVITY – VOCAL CORDS - ESOPHAGUS



5. Check the alternative that contains only Pre-Columbian Civilizations

- a) Aztec, Inca, Maya
- b) Roman, Greek, Inca
- c) Egyptian, Aztec, Viking
- d) Sumerian, Inca, Babylonian
- e) Maya, Chinese, Mesopotamian

6. Match the type of benefit sports can bring to the correct description: (Relacione o tipo de benefício esportes podem trazer à descrição correta)

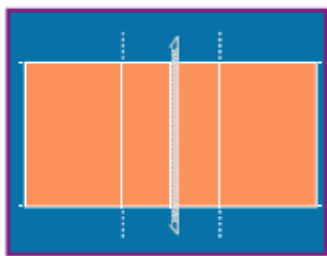
- a) Social Benefits
- b) Community Benefits
- c) School and Work Benefits
- d) Health Benefits

- 1- Improves teamwork, communication, and leadership skills useful in academic and work environments. ()
- 2- Strengthens cardiovascular health, increases physical fitness, and helps maintain a healthy weight. ()
- 3- Encourages a sense of belonging and strengthens bonds with local groups and organizations. ()
- 4- Helps develop social connections, foster friendships, and builds cooperation among peers. ()

7. Which of the following alternatives contains only Winter Olympic sports?

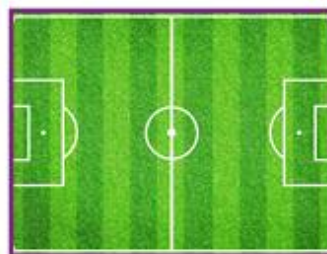
- a) Figure Skating, Ski Jumping, Archery
- b) Ice Hockey, Curling, Bobsleigh
- c) Snowboarding, Gymnastics, Alpine Skiing
- d) Speed Skating, Basketball, Biathlon
- e) Luge, Tennis, Cross-Country Skiing

8. Calculate the area of these sports grounds. (Calcule a área destes lugares)



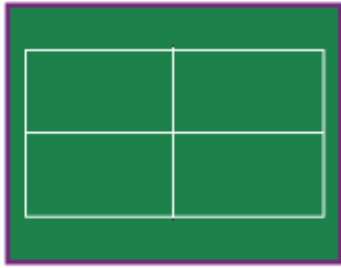
a) $3 \text{ m} \times 24 \text{ m} =$

a. _____



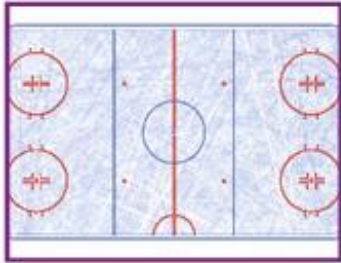
b) $137 \text{ m} \times 77 \text{ m} =$

b. _____



$$c) 8,5 \text{ m} \times 1,3 \text{ m} =$$

c.



$$d) 60 \text{ m} \times 180 \text{ m} =$$

d.

9. Read the text and match the types of maps to the images. (Leia o texto e nomeie os tipos de mapas com as palavras em negrito)

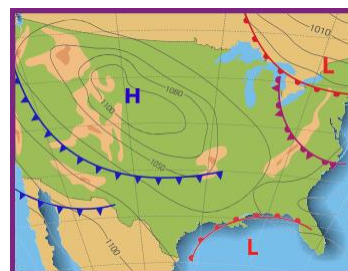
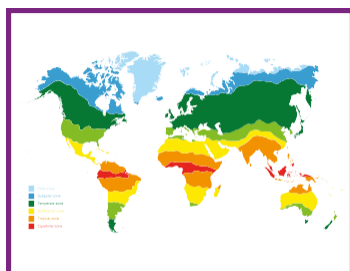
On a **political map**, you can find the areas and boundaries of countries, states and cities.

A **weather map** uses symbols such as lines and arrows to show meteorological features, foreexample, rain, wind, snow, etc.

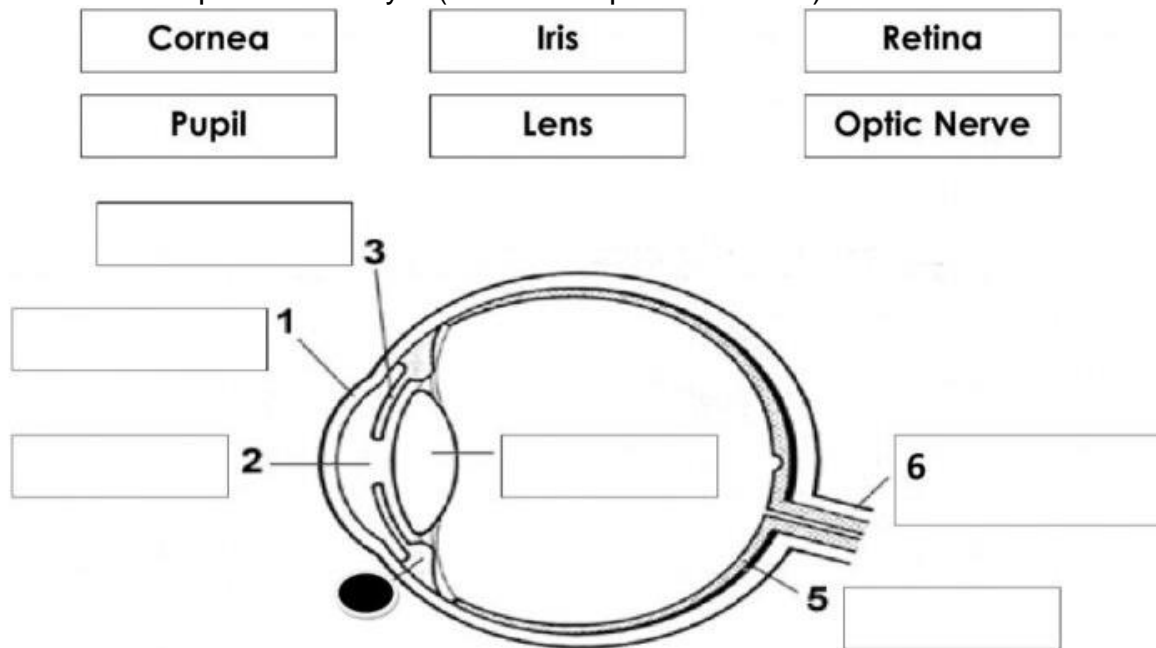
In a **climatic map**, variables such as temperature and precipitation are shown by using different colors.

You can check a **topographic map** to see differences in elevation represented by lines and numbers.

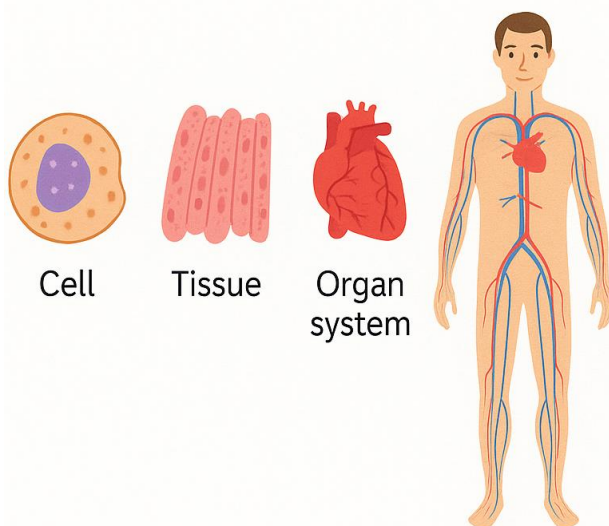
A **road map** is commonly used in navigation apps and also in print. It shows streets, roads, avenues and highways of an area.



10. Name the parts of the eye. (Nomeie as partes do olho)



11. Which is the correct order of the organization of our body? (Qual é a ordem correta da organização do nosso corpo?)



A) Organ system, Organ, Cell

B) Organ, Cell, Organ system
Tissue

C) Tissue, Cell, Organ system
Organ

D) Cell, Tissue, Organ, Organ
system

E) Tissue, Organ system, Cell

12. Complete the definitions with the words from the box below. (Complete as definições com as palavras do quadro abaixo)

ORGANS – CELLS – SYSTEMS – TISSUE – SKIN

- The _____ are the basic units of our body. They have different functions such as carrying oxygen, storing energy, transmitting information and so on.
- Groups of specialized cells form _____. Our blood, bones, skin, nerves, brain and muscles are examples of this.
- Bigger structures are called _____. Each of them has a different function. For example, the lungs help us breathe, just like the heart pumps blood to the body.
- The largest one in the human body is the _____, which is responsible for protecting us against environmental threats, regulating our body temperature and receiving sensory information.
- Groups of organs are called organ _____. They work together with a purpose, for example, digest food, hold and move our body or breathe.

13. What are the three main states of water?

- a) Solid, Liquid, Gas
- b) Solid, Plasma, Gasc
- c) Liquid, Gas, Plasma
- d) Solid, Liquid, Plasma
- e) Gas, Liquid, Energy

14. Check option that contains the consequences of urban heat islands.

- a) Colder days, heavier rains, too many gardens, dehydration
- b) Colder days, better air quality, too many gardens, technology access
- c) Landslides, heavier rains, floods, dehydration
- d) Landslides, better air quality, floods, technology access
- e) Landslides, heavier rains, too many gardens, technology access

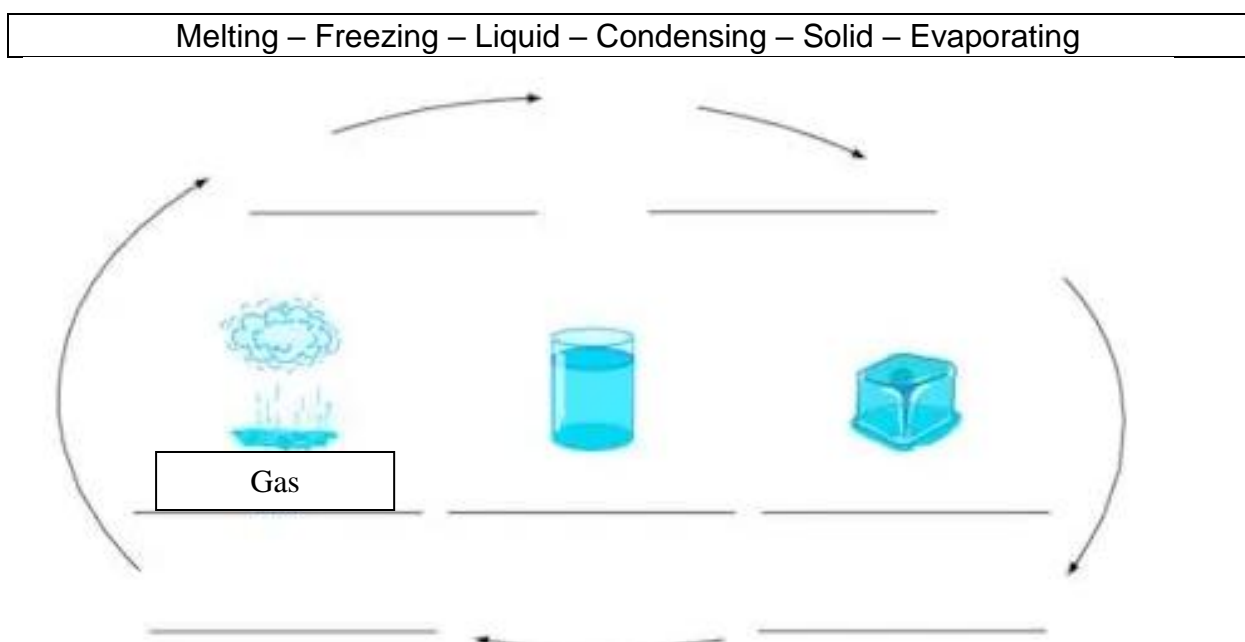
15. Read the sentences below. Decide if each one describes a Physical Change (P) or a Chemical Change (C). (Leia as frases abaixo. Indique se cada uma descreve uma Mudança Física (p) ou Mudança Química (c).)

- () Water boils and turns into steam.
- () A cake bakes in the oven.
- () Salt is mixed with water.
- () A bicycle chain gets rusty.
- () A piece of wood is cut in half.

• Choose the correct sequence:

- a) P – C – P – C – P
- b) C – P – C – P – C
- c) P – C – C – P – P
- d) C – C – P – P – C
- e) P – P – C – C – P

16. Name the change of states. (Nomeie as mudanças de estado)



17. Relate the layers of the Earth to what they are made of. (Relacione as camadas da Terra com o que elas são formadas.)

- | | |
|---------------|---------------------------------|
| a) Crust | () solid iron and nickel |
| b) Mantle | () rocks, minerals and sand |
| c) Inner Core | () liquid iron and nickel |
| d) Outer Core | () molten rocks or magma |

18. Choose the option that contains only consequences of the movement of tectonic plates. (Escolha a opção que contém apenas consequências do movimento das placas tectônicas.)

- a) Earthquakes, volcanic eruptions, and mountain formation
- b) Rainfall, erosion, and river flow
- c) Tornadoes, hurricanes, and droughts
- d) Ocean tides, winds, and snowfall
- e) Soil fertility, photosynthesis, and evaporation